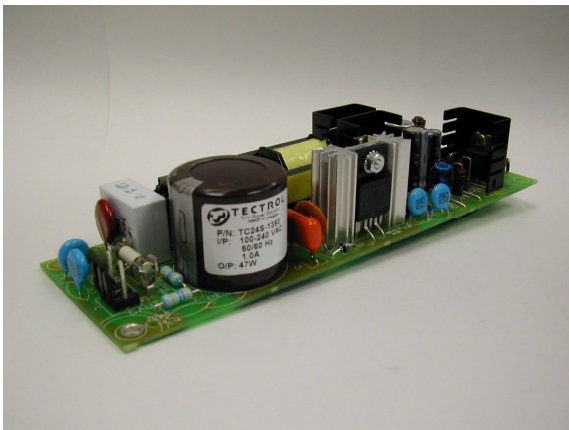


TCP-60

60 Watt Single Output Power Supply

TECTROL 60 WATT CONFIGURABLE POWER PLATFORM



The TCP-60 is part of a family of 1U power supplies that includes models with industry standard voltages and a series of modifiable platforms that can be customized to address application-specific output requirements.

The TCP-60 provides 60 Watts of highly reliable DC power in a low profile (sub 1U) open frame that is designed to deliver high efficiency and low noise characteristics for telecom, industrial and medical applications.

Its small footprint and slim profile make the TCP-60 ideally suited for deployment in systems with limited space available for power components.

Capable of parallel operation, for higher reliability, and current share, for increased power, the TCP-60 can be installed in either forced air cooled or convection only environments.

FEATURES

- True 60 Watt output power (no de-rating)
- Wide range (universal) input
- Slim 1U profile minimizes power footprint
- Parallel operation provides high reliability
- Power efficiency rated at greater than 80%
- Current share delivers increased power
- Low leakage provides ideal solution for medical instrumentation applications
- VRM compatible
- Strenuously HALT tested to ensure maximum reliability and long life

AGENCY COMPLIANCE

- UL/cUL Approval
- TUV Approval
- CE Mark (LVD requirements of EN 60950)
- Medical Approval to EN 60601-1 and UL 2601

EMISSIONS AND IMMUNITIES

- EN 55022 Class B Emissions
- EN 61000-3-2 – exempt at rated power
- EN 61000-4 Compliance

MAX OUTPUT POWER	OUTPUT (Volts)	OUTPUT (Amps)	POWER INPUT (VAC)	MODEL NUMBER
60 W	48	1.25	90 – 264	TCP-60-48
60 W	24	2.50	90 – 264	TCP-60-24
60 W	12	5.00	90 – 264	TCP-60-12



TECTROL[®]

.....

Total Power Solutions[®]

TCP-60 60 Watt Single Output Power Supply

TECHNICAL SPECIFICATION

INPUT SPECIFICATION

High Line Input	90 to 264 Vrms, 47 to 63 Hz
AC Line Input	< 1.5 Arms max @ 90 VAC input voltage
Line Inrush Current	< 20 Apk @ 115 VAC 40 Apk @ 230 VAC half cycle, cold start (25° C)
Harmonic Compliance	Exempt at full output power
Leakage Current	0.25 mArms
Voltage Dips/Interruptions	Complies with IEC/EN 61000-4-11
Transients & Surges	Complies with IEC/EN 61000-4-5
Efficiency	> 80% full load, nominal line

OUTPUT SPECIFICATION

Factory Set Output Voltage	Nominal ± 0.1 V @ 50% FL
Total Voltage Regulation	± 1% (line, load regulation, temperature)
Ripple & Noise (PARD)	± 1% of nominal
Output Current	48 V @ 1.25 A to 12 V @ 5 A
Module Power	60 W continuous operation @ 55 °C
Parallel/Current Share	Passive (slope) method
Transient Response	5% deviation from nominal set voltage for 10 to 90% step load change. Recovery to within 1% within 300 mS.

PROTECTION

Overload Protection	125% over power limit. Unit protected against a permanent short circuit.
Over Voltage Protection	120% initiates unit shut down. Reset by recycling of the incoming AC supply.
Over Temperature Protection	Shut down in the event of operation in excessive ambient or blocked/failed airflow with self-recovery following temperature reduction.
Signals	I/O Signals: AC Fail, DC Good, Over Temp, Module Present & Remote Latch Off.
Indicators	LED Indicators: AC Fail, DC Good, OVP Shutdown & Thermal Shutdown.

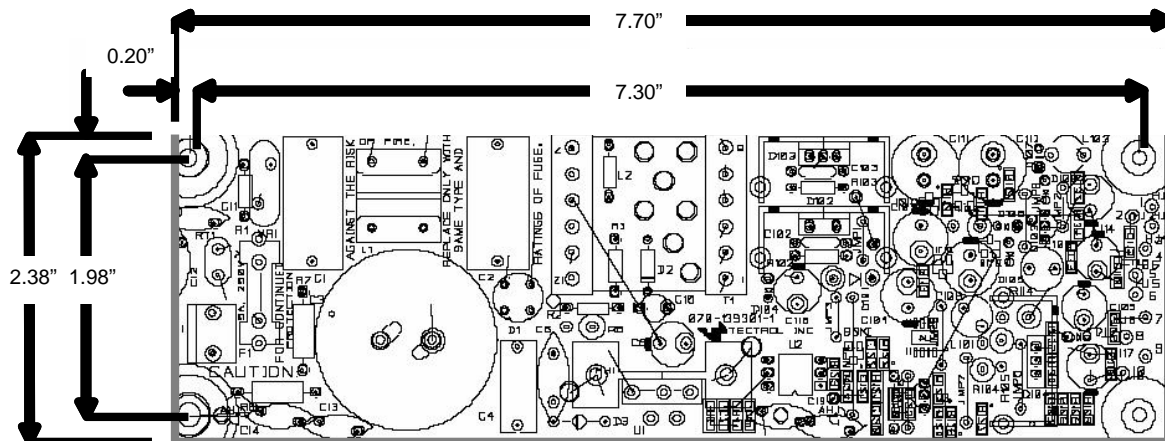
MECHANICAL FORMAT

Input Connector	2-pin 0.312" pitch connector (Molex 3-pin 5096 series with center pin removed).
Earth Tag	0.25" vertical faston terminal.
Output Connector	Cable harness terminated to Berg series 67096 receptacle.
Mechanical Outline	1.25" x 2.38" x 7.70" (H x W x L) 31.75 x 60.33 x 195.6 mm (H x W x L)

ENVIRONMENTAL

Temperature Range	Operational: 0 to 55 °C, FL no derating
Cooling / Airflow	Convection cooled

General Outline of TCP-60



Tectrol Inc.
 39 Kodiak Crescent, Toronto, Canada M3J 3E5
 Tel: + 1 (416) 630 8108 Fax: + 1 (416) 638 0553
 sales@tectrol.com www.tectrol.com

European Office
 Tel: + 44 (208) 399 6824
 Fax: + 44 (208) 390 7355
 eurosales@tectrol.com